

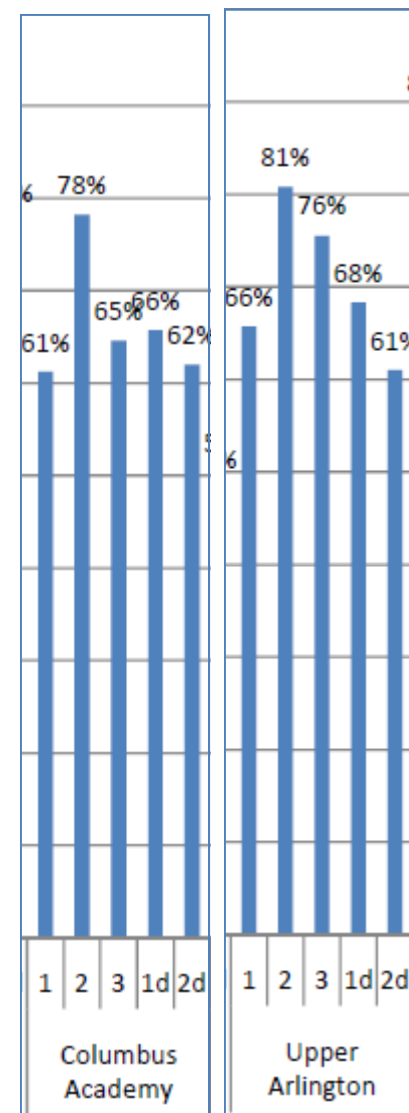
# CENTRAL OHIO - HIGH SCHOOL TENNIS COURT COMPARISONS

CREATED BY SCOTT GERBER - GERBER ANALYTICS, LLC

This is an update to the 2009 document. This document provides readers with the performance of each court (i.e. 1st singles, 2nd singles) for the prominent tennis teams in Central Ohio. It includes data for the Boys for the 2006-2010 seasons and for the Girls for 2008-2009.

This document offers another way to look at the Boys and Girls' seasons. Each bar in the following charts represents the game winning percentage of that specific court position. For example, if a player on court one wins a match 6-3, 6-3, then his game winning percentage would equal  $(6+6)/(6+3+6+3)$  or 66%. These numbers have been accumulated for the entire season for each court (not by that specific player). If a team was perfectly balanced and all of that team's competition was perfectly balanced, then a team that won 66% of its matches would also win 66% of its games. Obviously, that doesn't happen but these charts are still helpful to see which positions "stand out" from the rest. These numbers are also only tabulated when a specific position is identified. Therefore, Sectionals, Districts and numerous tournaments are not included because 1st Singles, 2nd Singles, etc. players were not readily apparent.

The main purpose of this document is to help identify players that may have been "out of position" in the lineup. What I looked for was a 2nd doubles position that was playing substantially better than 1st doubles, or a 3rd singles position that was playing substantially better than 1st or 2nd singles. Please note that I did not see any issues or problems for the Boys for the 2009-2010 school year. (The Girls may have been a different story).



These graphs also indicate teams that may have had too difficult or too easy of a schedule. Sometimes schedules are out of a coach's control. Other times, a coach may be unaware of his / her talent. In some cases, a coach may be pursuing a great record. Please note that neither Upper Arlington nor the Columbus Academy Boys teams (both OTCA Champions) had the best looking charts because they sought out and played great competition during the season. Their 2010 performance charts are shown on the first page.

As you look at these charts, it will become apparent who the standout players were for the various teams each year. To jog your memory, some of the top players were included for each year. In fact, if you refer back to this year's Top Players List, the standout players will be more obvious as well. For example, if you wondered why the UA Boys team deserved three players on my Top Singles list, just check their chart.

This report is a bit time consuming to put together so not all of the teams are included. If you are really curious about your team, please let me know and I will put together your team chart.

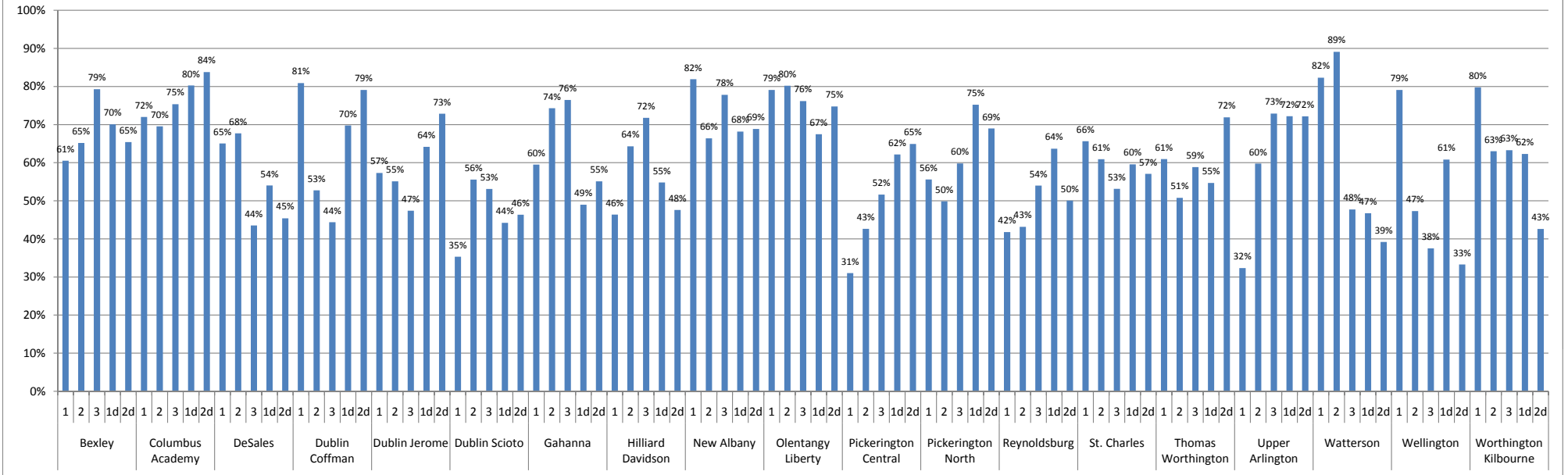
As always, please contact me with any questions.

Gerber Analytics, LLC

ScottGerber "at" cs "." com



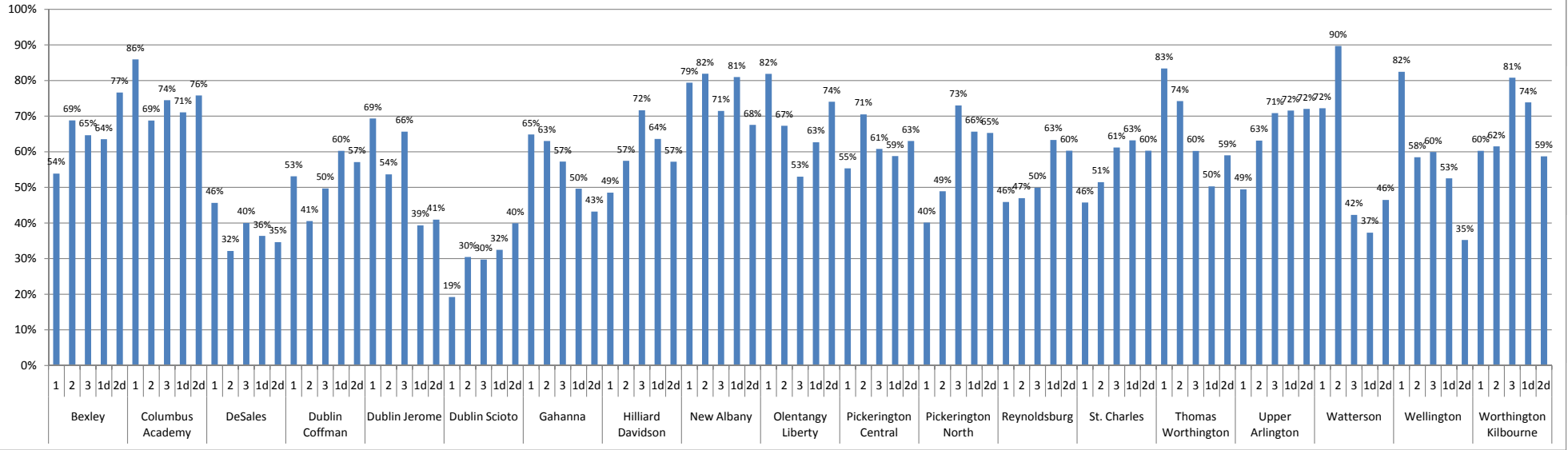
## BOYS TENNIS - 2009 GAME WINNING % BY COURT



**Standout Players / Teams:**

- Philip Diaz (Senior) / Chris Diaz (Sophomore) - Watterson
- Kevin Metka (Junior) - Worthington Kilbourne
- Peter Kobelt (Senior) - New Albany

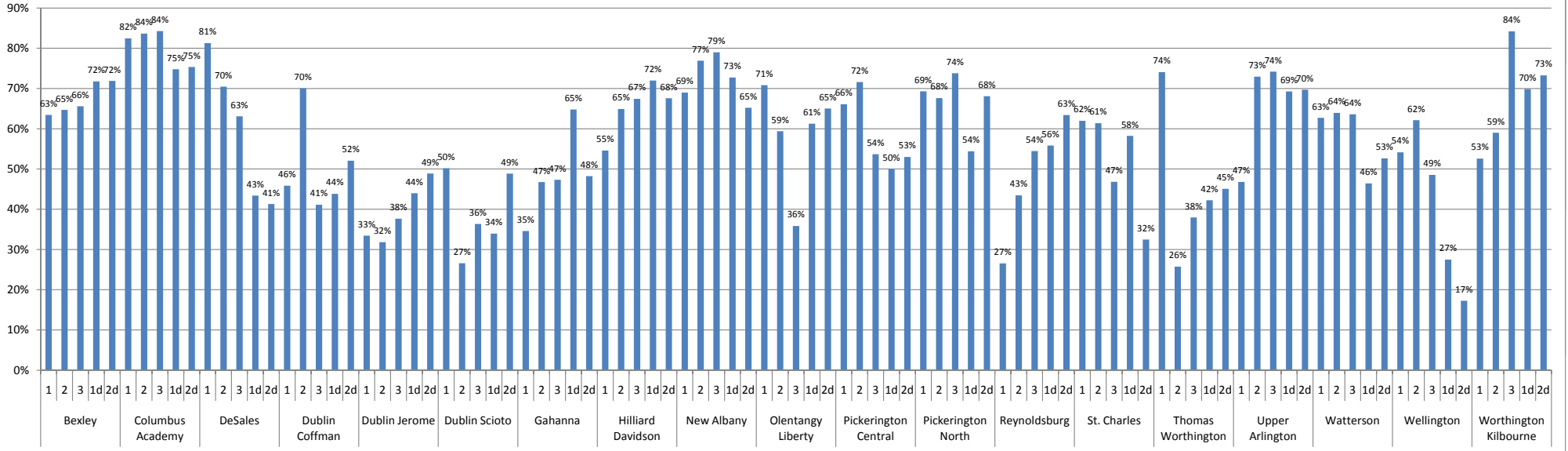
## BOYS TENNIS - 2008 GAME WINNING % BY COURT



**Standout Players / Teams:**

- Will Pietre (Senior) - Columbus Academy
- Arren Carter (Sophomore) - Olentangy Liberty
- Philip Diaz (Junior) / Chris Diaz (Freshman) - Watterson

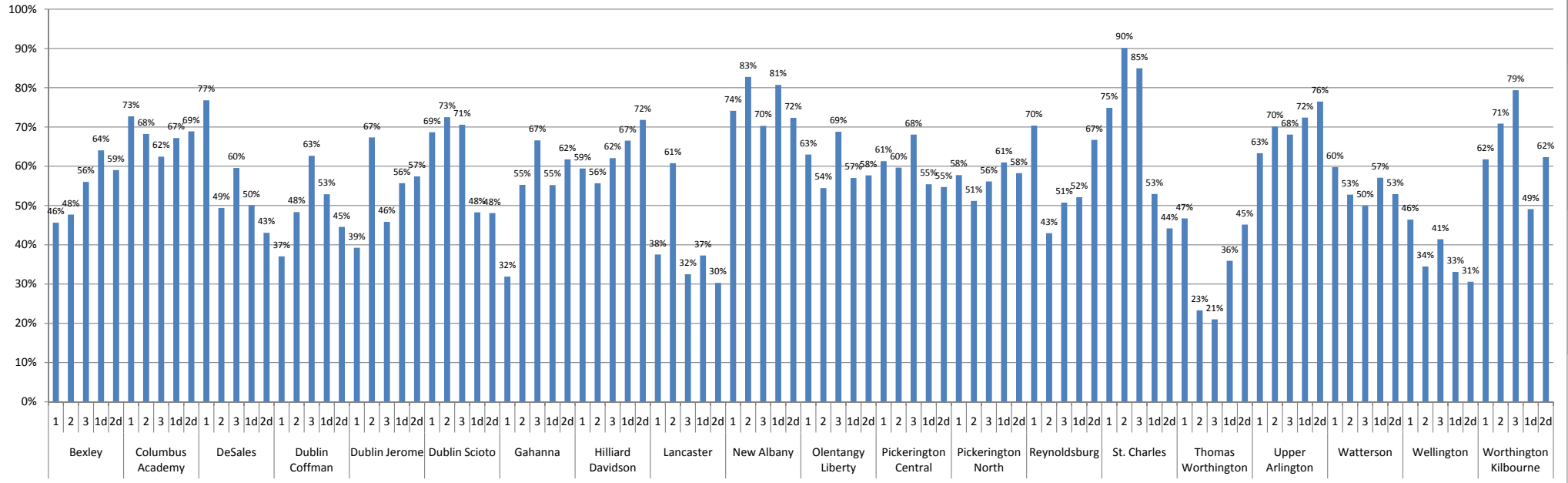
## BOYS TENNIS - 2007 GAME WINNING % BY COURT



**Standout Players / Teams:**

- Will Pietre (Junior) - Columbus Academy
- Bryce Warren (Senior) - DeSales
- Tyler Cempre (Junior) - Thomas Worthington

## BOYS TENNIS - 2006 GAME WINNING % BY COURT



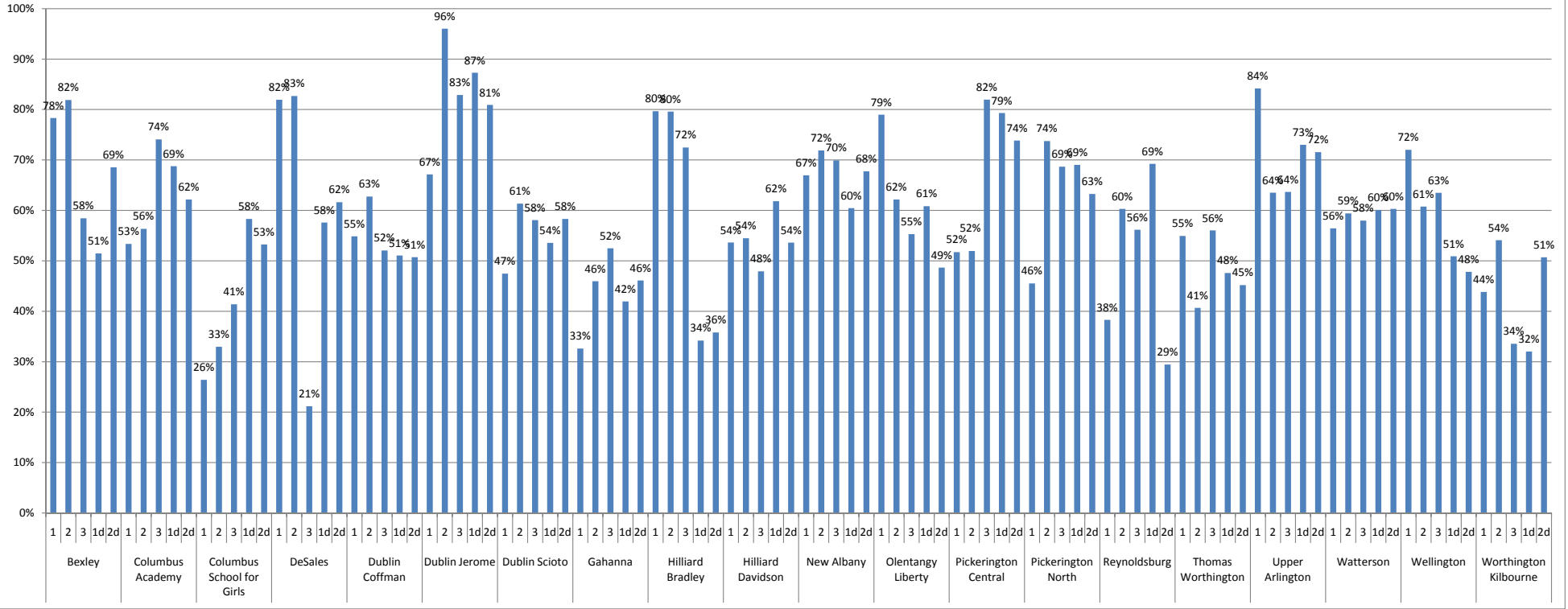
**Standout Players / Teams:**

Will Petrie (Sophomore) - Columbus Academy

Bryce Warren (Junior) - DeSales

Arthur Cheng (Senior) / Kyle Gerber (Freshman) / Tommy Murko (Sophomore) - St. Charles

## GIRLS TENNIS - 2009 GAME WINNING % BY COURT

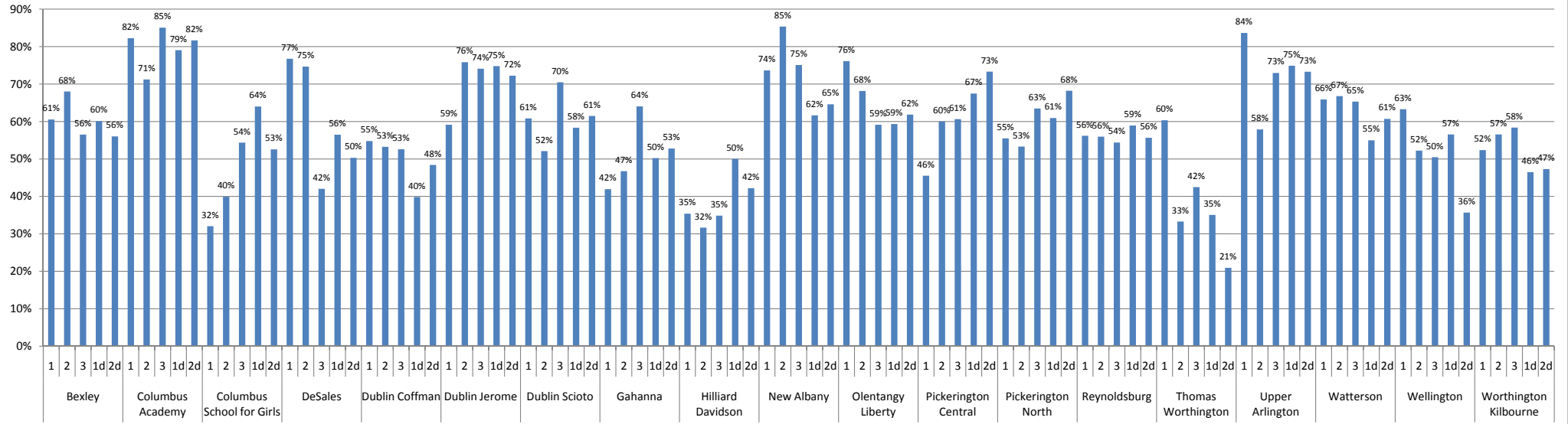


**Standout Players / Teams:**

- Niki Flower (Junior) - Upper Arlington
- Kim My Li (Senior) / My Linh Li (Freshman) - DeSales
- Lauren Thai-Freshman / Ashley Thai - Freshman
- Dublin Jerome - Utkin, Stein, Belling, Farrar/Doran, Easdale/Schnell
- Corrine Rauck (Senior) / Maddie Morton (Junior) - Bexley
- Alex Power (Senior) - Olentangy Liberty



## GIRLS TENNIS - 2008 GAME WINNING % BY COURT



**Standout Players / Teams:**

- Niki Flower (Sophomore) - Upper Arlington
- Maddie Kobelt (Junior) / Meghan Buell (Sophomore) - New Albany
- Christiana Raymond (Junior) - Columbus Academy